



Sheraton®

Royal Orchid Sheraton Hotel & Towers





Welcome to Royal Orchid Sheraton Hotel & Towers

Located on the bend of the Chao Phraya River, the Royal Orchid Sheraton was built in a “Y” shape so all guestrooms and suites provide magnificent views of this fabled “River of King”.



Location

Distance from Suvarnabhumi International Airport is 40 km / 25 miles

Shuttle Boat

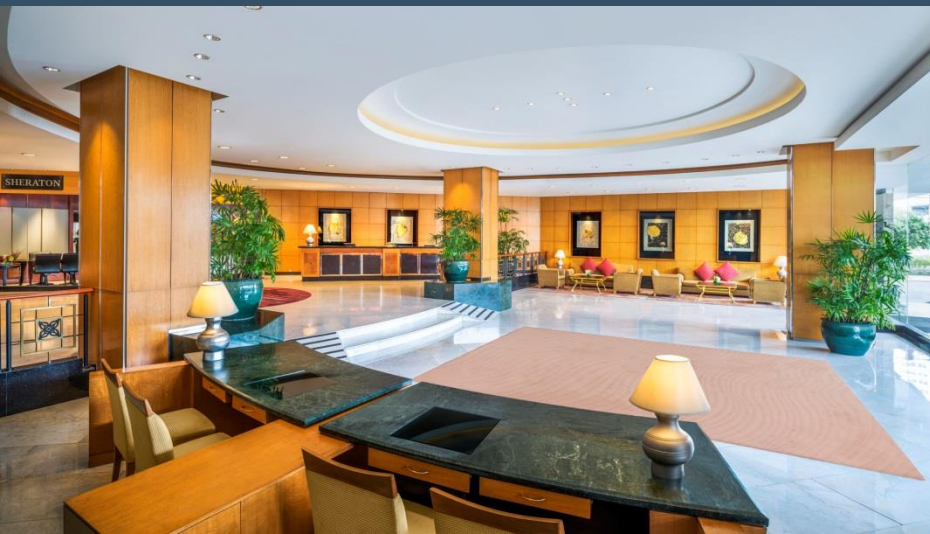
Complimentary river service to the Saphan Taksin skytrain station (BTS), a seven-minute ride from the hotel, operates from 10:00 AM to 10:00 PM daily and leaves every 30 minutes





Group Arrival Lobby

Main Lobby



Offer a creative, themed sense of arrival, an exclusive arrival for the group or even a central point for the group to meet outside event times



Guest Rooms and Suites

- The only hotel along the river to offer uninterrupted panoramic river view of 726 spacious guestrooms including 67 suites
- Exclusive club floors and lounge
- High ROH room bank (564)
- Large inventory of twin bedded rooms (252)
- Sheraton Signature Bed with its crisp cotton sheets, soft duvet and plush down pillows

Deluxe Riverview Room (36 sqm.)



Premium Deluxe Riverview Room (36 sqm.)



Junior Riverview Suite (55 sqm.)



Executive Riverview Suite (70 sqm.)



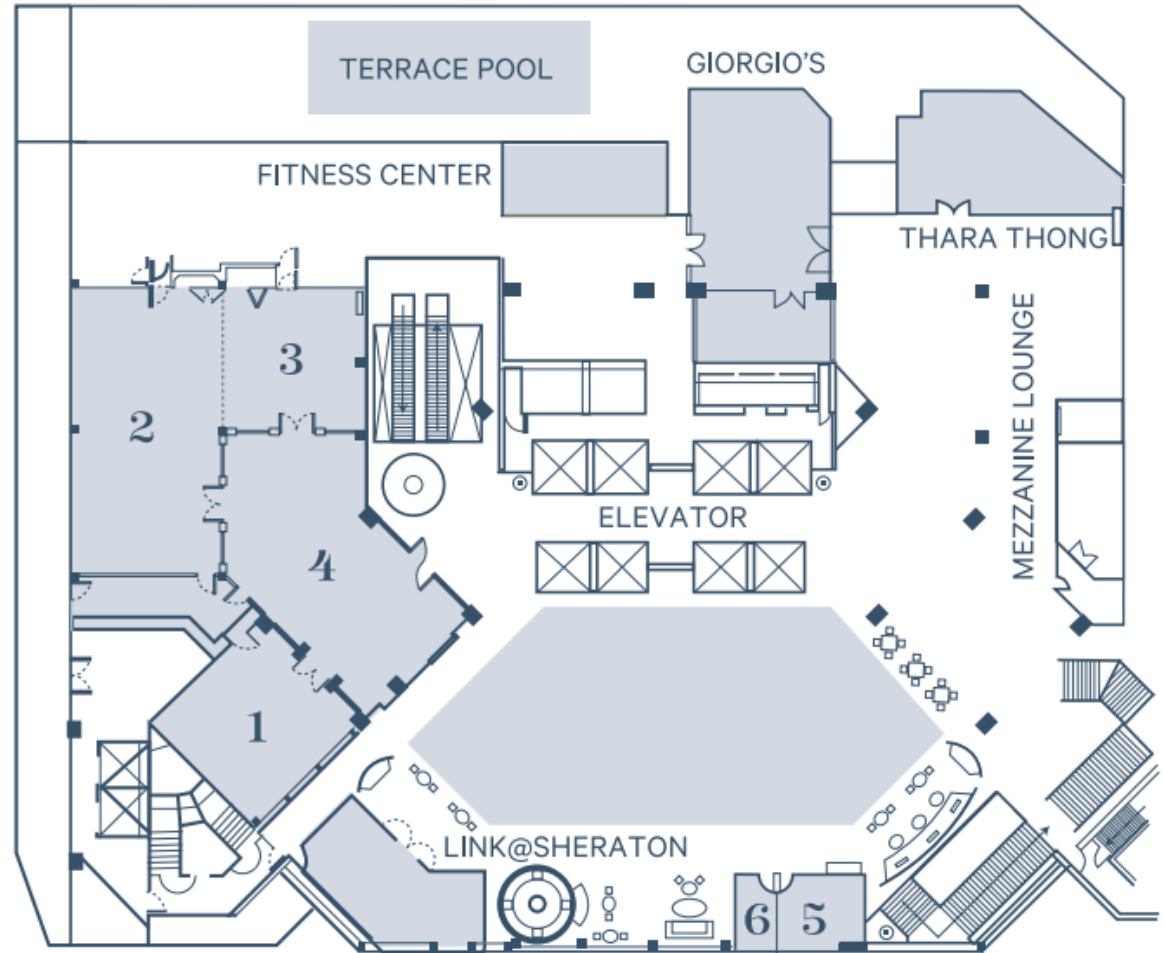


Meeting and Function Rooms

- Over 2,800 square meter function space featuring 22 function rooms, many with river views including the ballroom
- Extensive meeting facilities housed on the same floor with variety sized meeting rooms
- Up to 1,152 delegates in a meeting setting, 1,000 people for a cocktail reception or 650 people for a sit-down dinner

FIRST FLOOR KEY

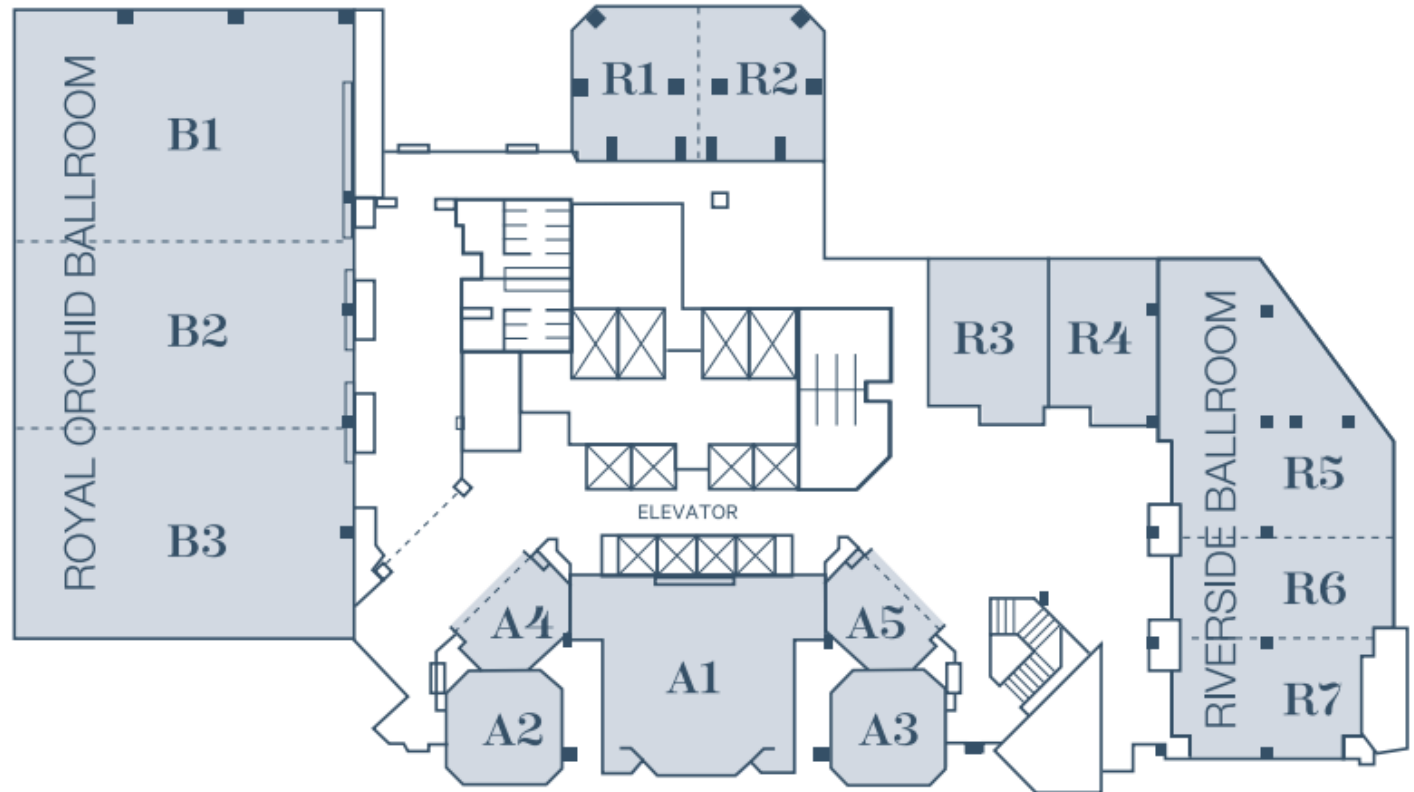
ROOM 1	PANISEA 1
ROOM 2	PANISEA 2
ROOM 3	PANISEA 3
ROOM 4	RPANISEA LOUNGE
ROOM 5	BUSINESS CENTRE 1
ROOM 6	BUSINESS CENTRE 2



Meeting floor plan

SECOND FLOOR KEY

- B1 BALLROOM 1
- B2 BALLROOM 2
- B3 BALLROOM 3
- R1 RIVERSIDE 1
- R2 RIVERSIDE 2
- R3 RIVERSIDE 3
- R4 RIVERSIDE 4
- R5 RIVERSIDE 5
- R6 RIVERSIDE 6
- R7 RIVERSIDE 7
- A1 POMPADOUR
- A2 CATTLEYA
- A3 CALANTHE
- A4 AYARET
- A5 VANDA



Meeting floor plan



Royal Orchid Ballroom (985 sqm.)

- river view
- pillar less
- ceiling height 5.3 m
- 540 classroom
- 650 banquet
- 1,000 cocktail

Pompadour



Riverside



Panisea



Mezzanine Lounge (group lunch)





Restaurants and Bars

- Four award-winning restaurants as well as a bar offering a wide range of cuisine including Thai (*Thara Thong*), International (*Feast*), Italian (*Giorgio's*) and Grill & Tapas (*Riverside Grill*) as well as expertly mixed cocktails and fine wines (*Lobby Lounge*).
- Variance options for group meals including welcome reception along the river side

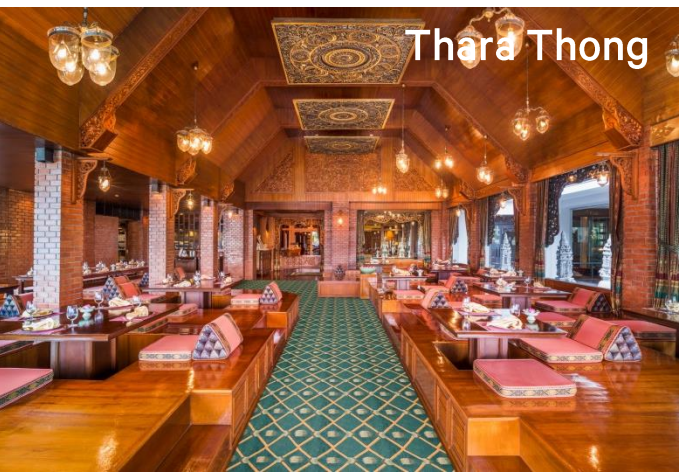
Feast



Riverside Grill



Thara Thong



Giorgio's



Lobby Lounge



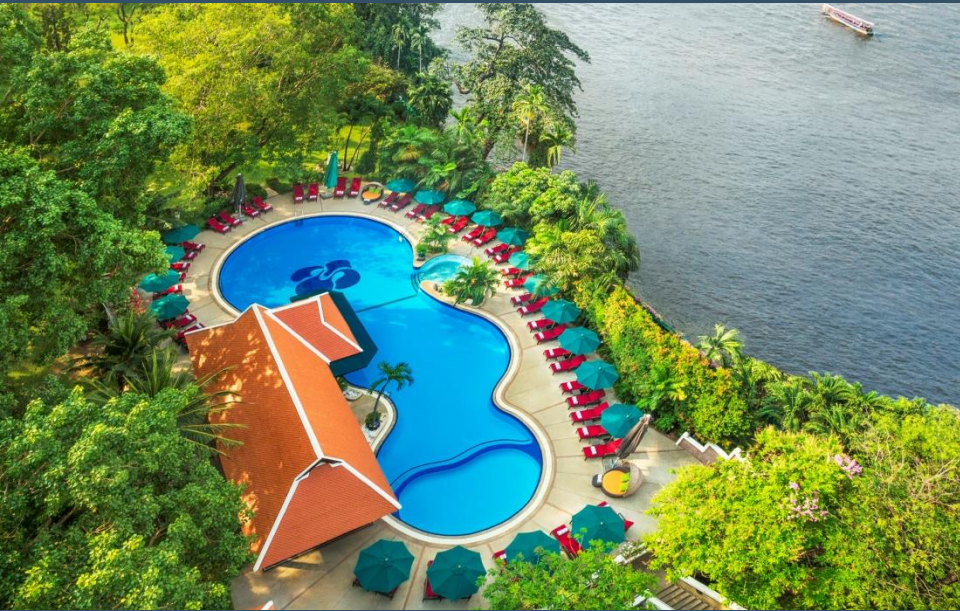
All of our restaurants offer terraces for al fresco dining on the river. With a sleek bar plus our Lobby Lounge, there are plenty of places to relax over expertly blended cocktails and fine wines.



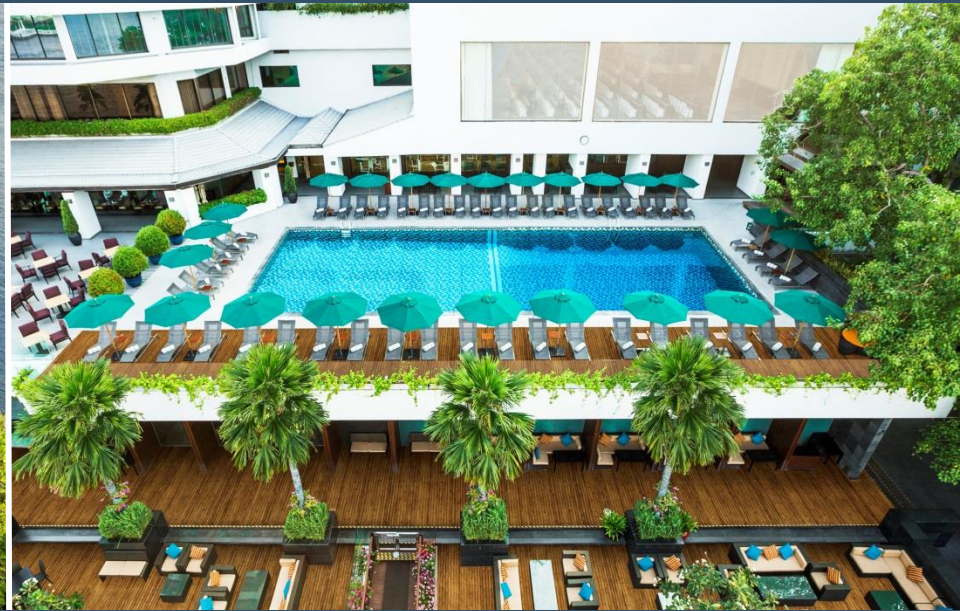
Other Facilities

- **Two outdoor swimming pools:** one terrace pool, excellent for exercise, and one magnificent garden pool with a Jacuzzi, surrounded by tropical trees.
- **24 hour guest access to Sheraton Fitness:** be at your peak at all times and let Sheraton Fitness be your solution to a healthy lifestyle while on the road, including sauna, jogging track, and tennis court options for group meals including welcome reception along the riverside
- **A variety of treatments by professional therapists at the Royal Orchid Mandara Spa**

Garden Pool



Terrace Pool



Sheraton Fitness



Royal Orchid Mandara Spa





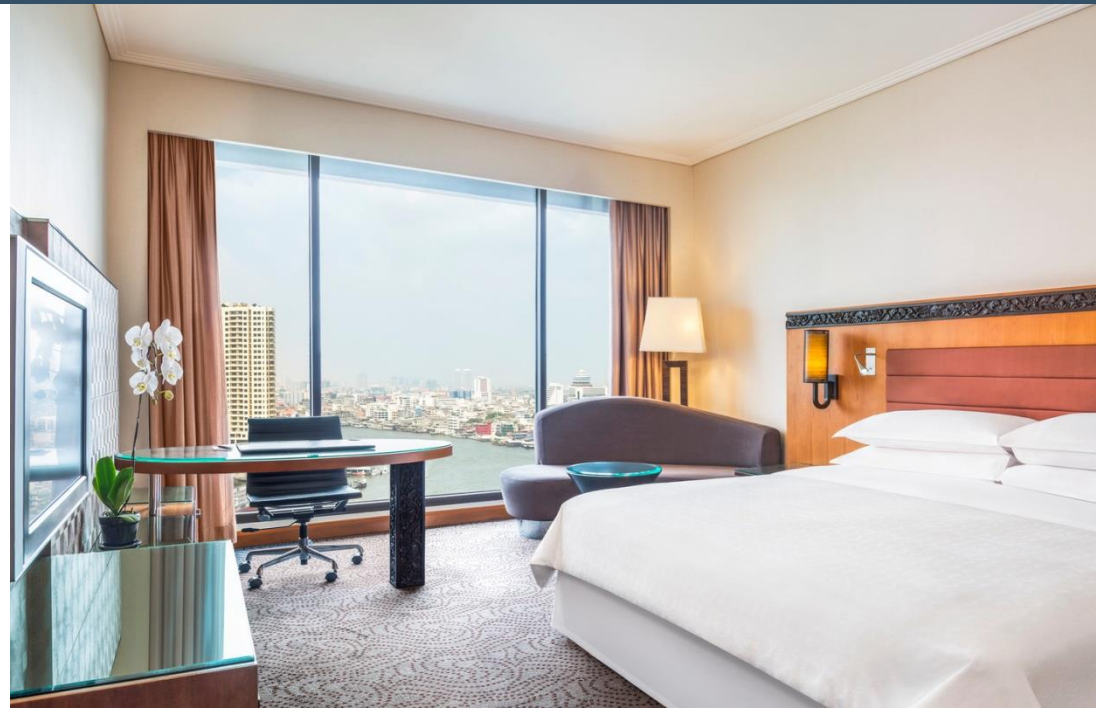
Sheraton Club Lounge

With exceptional river views and intimate seating areas, the lounge is an ideal setting for gathering with friends or holding an impromptu business meeting.

The Sheraton Club promises an exclusive Bangkok hotel experience.

Club Rooms

For an extra degree of luxury, the Club floors provide 110 elegant Club rooms and suites. Club Floor allows access to a higher level of comfort, complete with special services like complimentary breakfast and a premium selection of beverages and hors d'oeuvres daily in the Club Lounge



also enjoy...



Off-site dining options : Outside Catering Service



△ Royal Navy Hall ▽ Museum Siam



△ Grand Postal ▽ Dinner Cruise



Local Attractions: Asiatique The Riverfront



Only 3.8 km. from Royal Orchid Sheraton
18 mins by boat from Siphya public pier (next to the hotel)

- The first and the biggest lifestyle project on the banks of the Chao Phraya River
- Night shopping places (1,500 shops) under the concept of festival market and living museum
- Entertainment such as Joe Louise Thai puppet, Calypso Cabaret and Muay Thai Live.



Local Attractions



Yodpiman River Walk △

Tha Maharaj ▷

Yaowaraj (China Town) ▽



discovering the communities & attractions
along the River of Kings and the heart of Bangkok







Effortless Travel

ROYAL ORCHID SHERATON HOTEL & TOWERS

2 Charoen Krung Road Soi 30 (Captain Bush Lane)

Siphya, Bangrak, Bangkok 10500 Thailand

t +66 (0) 2266 0123

f +66 (0) 2236 8320

www.royalorchidsheraton.com



ROYAL ORCHID

Sheraton[®]

HOTEL & TOWERS